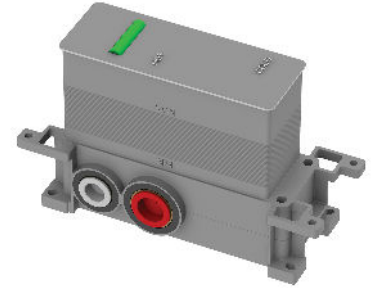


BOX | built-in part for thermostatic 2-way mixer

Finish:

Built-in part to be completed with exposed parts in order to create the complete thermostatic shower/bath mixer. Find out more in technical specification.

Certificates: Polish Hygienic Certificate PZH



Technologies



The mixer is equipped with the highest quality thermostatic cartridge incorporating a 38°C lock. The cartridge protects against sudden temperature changes and guarantees long term product performance.

Flow characteristics

- water flow at 3 bar: 22 l/min
- hot water supply: max. 90 °C
- working pressure 1-6 bar

Specification

- minimum wall depth: 7 cm
- two 3/4" inlets (hot and cold water)
- two 1/2" mixed water outlets
- with filters and non-return valves
- hot water lock at 38°C
- complementary product to: Y1236/KROCR, Y1236ROCR, Y1236ROBL, Y1236ROGL, Y1236ROGLB, FR7136ROCR

