



IonPolarization
System

KalyxxActive




***The original water structuring vortex device
creates unique water properties for limescale protection
and water activation***

- Reduces the formation of scale in water systems with an efficiency of up to **76%**.
- Antibacterial effect - Reduce the amount of Escheria Coli bacteria up to **40%**.
- Activates water and optimizes its structure for a positive effect on the living organism.
- Increases the antioxidant activity of plant parts and their resistance to drought.



Let the Water Flow



WATER THE BASIC SOURCE OF LIFE

Water is not just H₂O, but a living organism with its own laws that people must respect. It hides similar secrets as the blood in the human body, it fulfills functions in nature that justify talking about it as the blood of the Earth. It is a living substance that is born and continues to develop and, under normal circumstances, passes into higher forms of energy. We should allow it to move in its natural environment and to develop in it.

– Viktor Schauberger

SAT Patented Technologies for Water Treatment

It might seem that we already know everything about water, but in recent decades a number of revolutionary findings have emerged that completely change the perception of water from a chemical formula to a rather living organism. These are the results of research by Professor Masaru Emoto (water perceives emotions), Gerald H. Pollack (4th state of water), Viktor Schauberger (water is a living organism), M. V. Kurik (water energy) or L. Montagnier (water has memory).

Our technologies use a tiny part of this new knowledge and we are constantly working to get to know water better and better, and we are implementing this new knowledge into future generations of our products.

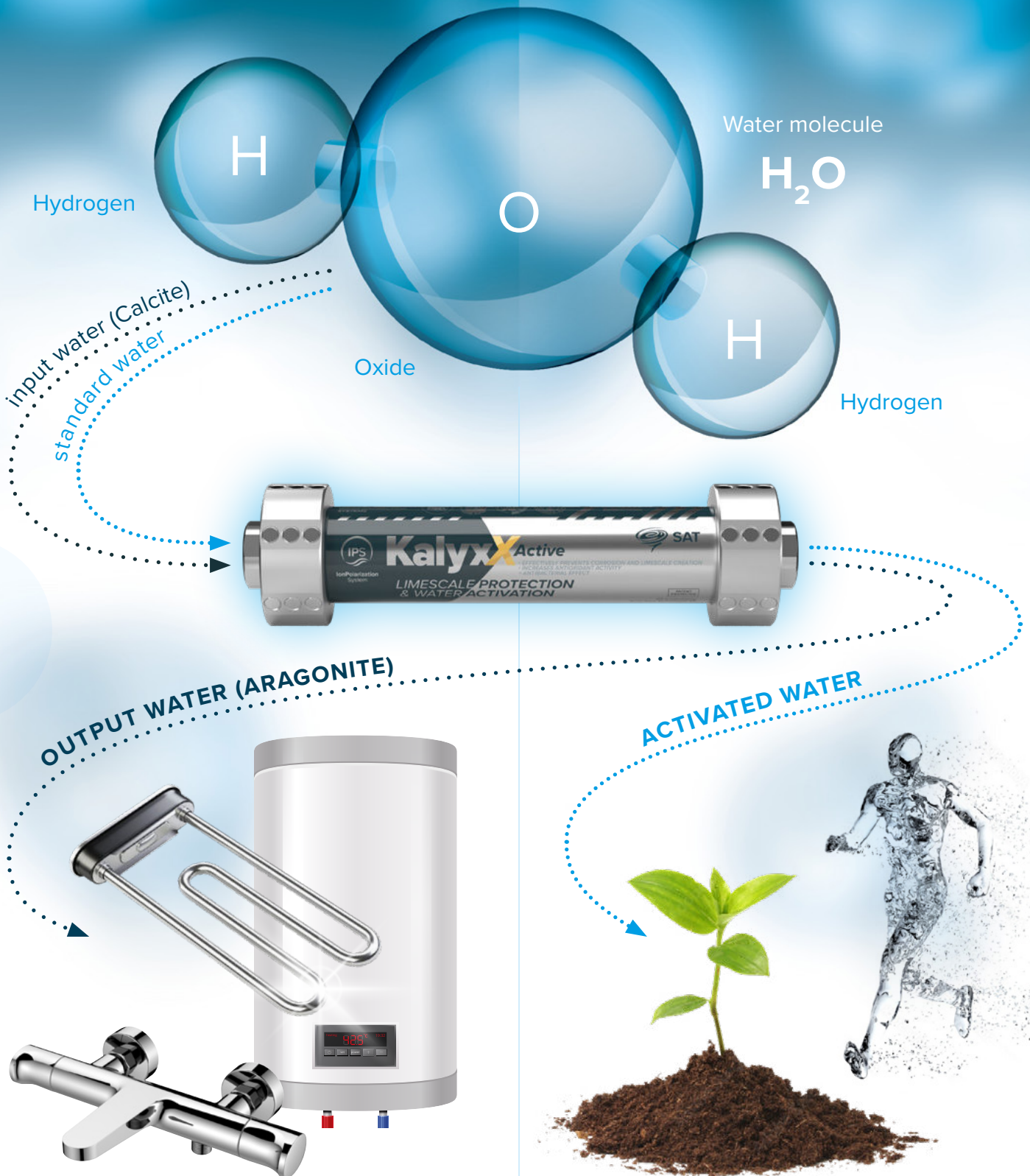


Let the Water Flow

KalyxxActive

LIMESCALE PROTECTION

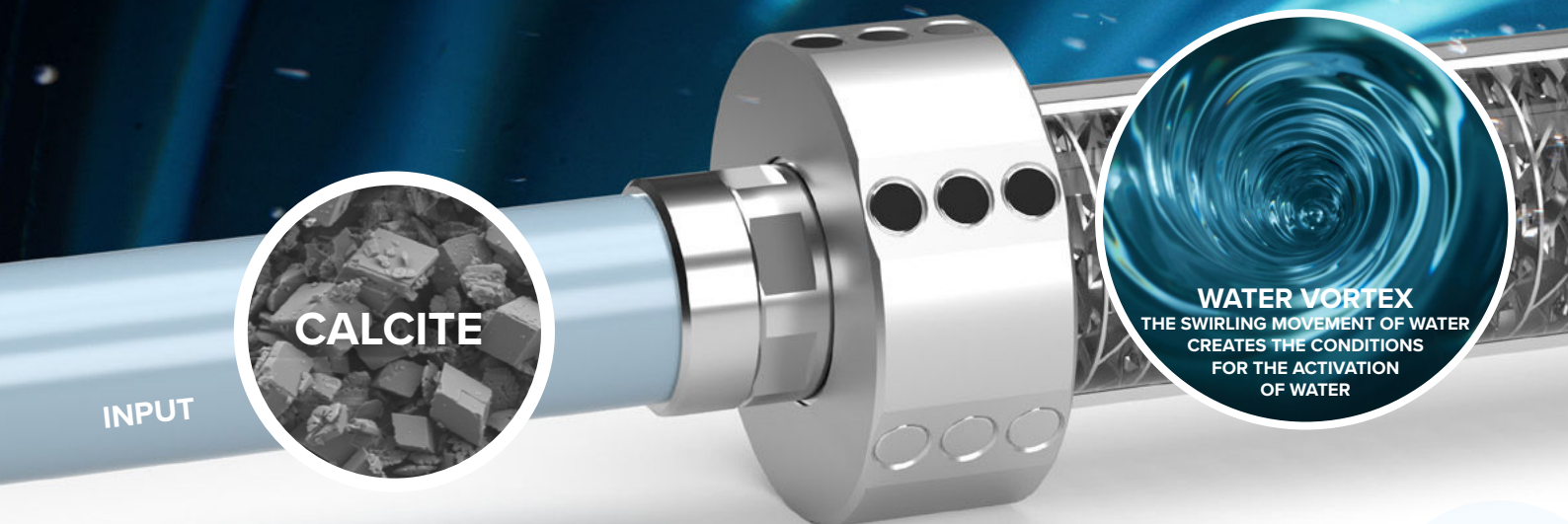
WATER ACTIVATION





IonPolarization
System

KalyxX Active



KalyxX Active is an original vortex water treatment device that creates unique properties of water by changing its structure. The certified effectiveness of protection against limescale reaches up to 76%. It uses energy of spinning water and electrodes creating a galvanic potential up to 4.5 V.

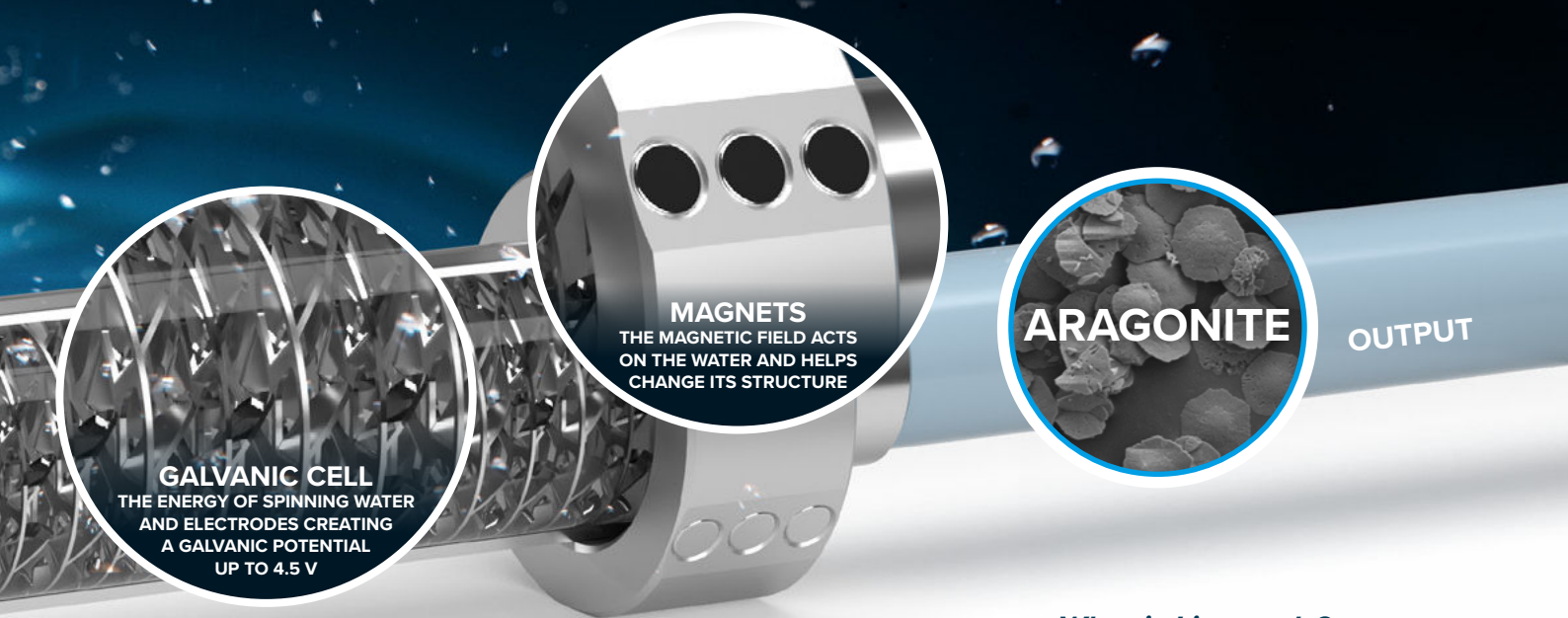
KalyxX Active

LIMESCALE PROTECTION



- **Changes hard calcite to soft aragonite.**
- **Reduces the need to de-scale tankless heaters, mixers, showers.**
- **Extends the life and efficiency of new and existing water appliances and devices through which water flows.**
- Antibacterial effect (silver electrodes).
- Doesn't restrict household water pressure.
- Connects directly to copper, CPVC or PVC pipe.
- Adapts easily for PEX and other pipe types.
- Environmentally friendly and chemical-free.
- No electricity required.
- Easy-to-install and maintenance-free.
- Certified for long-term contact with drinking water.





IPS - Ion Polarization System

IPS effectively prevents the formation of solid sediments and corrosion in cold and hot water appliances. IPS is a flow-through body with inside placed turbine-shaped electrodes of two different electrically conductive materials. The electrode design is patent-protected (TGP® – Turbulent Galvanic Polarization) and generates a swirling water flow, causing a change in the structure of the minerals.

IPS efficiency comparison

	Water heater after 12 months	Flow heater spiral after 6 months	Tap aerator after 6 months
Without water treatment			
With installed IPS			

Effect of IPS on sedimentation scale in an electric kettle

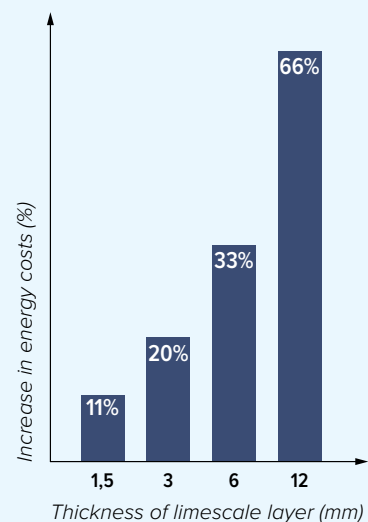


Day 1 - 15: the old limescale is gradually washed away.
Day 30: the new sedimentations are easy to wipe away.

What is Limescale?

When water comes from areas high in calcium or magnesium carbonate, hard water leaves mineral deposits commonly known as “lime scale” on plumbing components, mixers, showers, appliances.

Scale buildup can block pipes, thermostatic cartridges, faucet aerators, showers and cause components to fail. It's unsightly, leaves white deposits on clothes and dishes and is a constant nuisance for end-users. More significantly, scale build-up on water heater elements reduces their overall efficiency and drives up energy bills.



KalyxX Active

WATER ACTIVATION



The change in the scale structure is only one of the effects of water treatment in the KalyxX Active device. The flow of water through the KalyxX Active changes its energy-informational field. The result is the so-called “structured” or “activated” water. KalyxX Active water activation has been confirmed by three independent laboratories.

Slovak University of Agriculture

In 2021, the research team from the Slovak University of Agriculture in Nitra (Slovakia, EU) ensured several experiments with the application of activated water with the IPS system in laboratory, greenhouse and field conditions.

The measurements confirmed that the IPS device is unique and original for structuring water and creates unique properties in water.

Based on the experiments with plant species, the following effects of the action of IPS were clearly confirmed:

- **Increasing the antioxidant activity (AA) of plant parts – changing several important biologically active components in plants (vitamins, amino acids, flavonoids, polyphenols, polyphenolic acids and many others).**
- **Improvement of the water regime in plants – increasing tolerance against drought.**
- **Increased tolerance against biotic factors – lower presence of diseases.**
- **Shortening of the growing season.**
- **An increase in the content of cannabinoids in plant parts of hemp.**



A device developed by researchers to measure the effect of IPS-treated water at different pressures on plant growth.

Masaru Emoto's laboratory

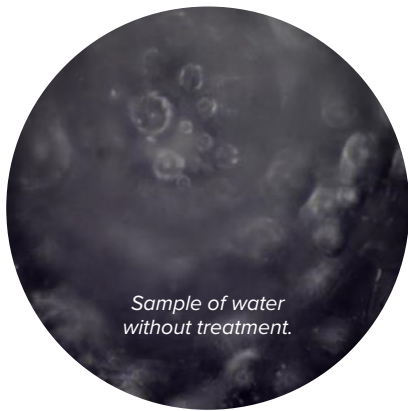
Water is one of the most indispensable substances for the life of human beings. It is not enough to take in a necessary quantity of water inside of the body, but we should take the quality of water into consideration. For instance, the district where a lot of long life people lives is blessed with high quality water from natural resource. In other words, it is becoming common sense that there are a lot of correlations between the health and the quality of water which we drink every day. Today, even if the water that we drink or use does not contain any detrimental ingredient, the quality of water is not always satisfactory. It is becoming clear that the formation of water crystal reflects the quality of water.

What does the crystal tell us?

The snow crystal has a beautiful hexagonal formation highly symmetric. The tap water gone through sterilization process by chlorine is likely to turn our more collapsed crystals and less evaluation mark than natural clean water. This may be partly explained by the influence of the chlorine residue materially.

Some researchers point out that there is a correlation between the formation of water crystal and its degree of water pollution and it can be one of the indexes of water quality in terms of the degree of pollution.

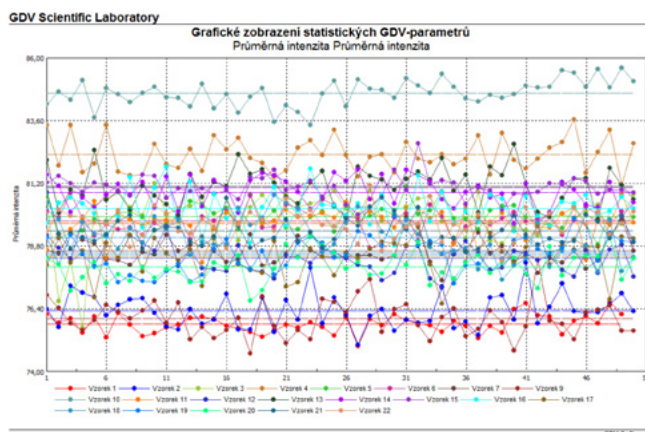
The water crystal formation reflects not only physical but informational or energetic aspect of the water.



(Source: The Report of Water Crystal Experiment, Office Masaru Emoto, LLC, July 2022)

GDV Laboratory

Experiments with the evaluation of some parameters of the energetics of the GDV camera of activated water created by the IPS system at different pressures clearly proved its uniqueness at the level of energy-information fields, which is the basic essence and uniqueness of the IPS device.



Results of measurements by the GDV method - Values for IPS treated water at different pressures. (Source: ALFA-MED s.r.o., Prague, 2022)

Activated / Structured Water

Structured water is a dynamic state of molecular bonding and information exchange. This type of water is beneficial for human life and is in harmony with nature. When one drinks and surrounds one's environment with healthy water, health continues to improve over time. Undoubtedly, this water has the fantastic ability to make unhealthy water, drained of life force, healthy and ready to drink again in a matter of moments. Information brought to any type of water, even spring water fresh from a mountain stream, is beneficial and yet improves the oxygenation and bio-availability of the water.

What is structured water good for?

- Optimal Hydration
- Elimination Of Bacteria
- Enhanced Hygiene
- Gardening Benefits
- Wastewater Management

GDV measurement

In 2014, French researcher Guy Londechamp presented the results of a five-year study of subjects who drank structured water prepared in his structured device. After testing over 100 people, 80% of participants showed an increase in their energy fields after drinking one glass of structured water.

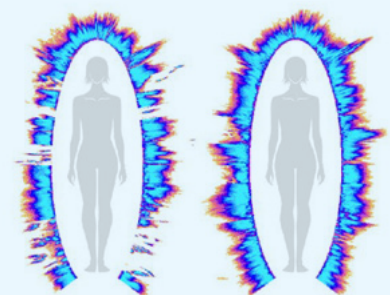


Fig. 1

Fig. 2

Figure 1: Before structured water.

Figure 2: After drinking a glass of structured water.

Aura breaks in Figure 1 indicate energy imbalances, while Figure 2 indicates increased energy.

(Source: Korotkov, 2020)

KalyxX Active

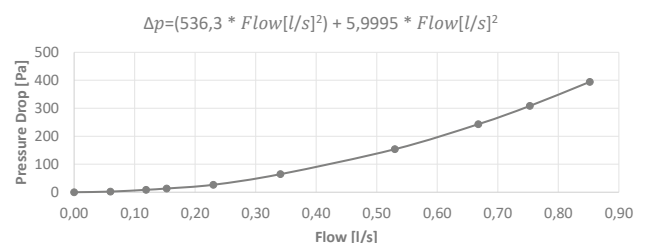
- Reduces creation of limescale on water supply elements – efficiency of 76%.
- Reduce the amount of Escheria Coli bacteria up to 40% (thanks to silver electrodes).
- Activates water for optimal bioavailability.
- Patented technology TGP® – Turbulent Galvanic Polarization – no chemicals, no external energy.
- Suitable for cold (drinking) and hot water.
- NRL Certificate for direct permanent contact with drinking water.
- Environmentally friendly and chemical-free.
- No electricity required.
- Health safety product – each part of IPS is made from material suitable for contact with drinking water.
- Safe product – Verified Hydraulic Properties.
- Durable body (Stainless steel 1.4301) and internal parts – 2 years warranty, works at least 10 year without any maintenance.

Technical parameters

- **Connection:** Female NPT/G x Female NPT/G
- **Patented Discs Composition**
- **Maximum Flowrate:** up to 4 m³/h*
- **Material:** Stainless Steel
- **Pipe Type:** Copper, CPVC, PVC, PEX, Steel
- **Maximum Pressure Drops:** 43 Pa – 692 Pa*
- **Operating Temperature (inlet):** 0 °C to 85 °C (Optimal temperature for maximum efficiency Min/Max (inlet): 0 °C to 60 °C)

* depends on model

Pressure



Model	Connection	Diameter (mm)	Length (mm)	Weight (g)	Max Pressure (Bar / MPa)	Max Flow (m ³ /hour)	Pressure Drop at Max Flow (mBar / Pa)
KalyxX Active 1/2"	G 1/2" (female)	71	274	910	10 / 1	1	0,4405 / 43,05
KalyxX Active 3/4"	G 3/4" (female)	71	245	890	10 / 1	3,2	4,29 / 429,08
KalyxX Active 1"	G 1" (female)	71	245	890	10 / 1	4	4,29 / 429,08



Swiss Aqua Technologies AG
Gewerbstrasse 9, 6330 Cham
Switzerland

swatec.ch